

ROCKY MOUNTAIN BEAD SOCIETY

LEARN | SHARE | CREATE | ENJOY

VOL 2024, ISSUE 3

2024 PROGRAMS SCHEDULE

APR 6 – Bead In and Crazy Woman Glass mini-trunk show; Field Trip to Beads & Needs

APR 15 – Sampler Instructor Application Deadline

APR 20 – Spring De-Stash

MAY 4 – Bead In

JUN 1 & 2 – Sampler

JUL 12 – Nancy Cain Presentation

JUL 13-14 – WORKSHOPS – Nancy Cain

AUG 3 – WORKSHOPS AND TRUNK SHOW – Caren Johannes – Wire Wrapped Pendant and Wire Wrapped Earrings

SEP 7 – Bead In

OCT 5 – Bead In

OCT 19 – RMBS Trunk Show

NOV 2 – Bead In

DEC 7 – Holiday Luncheon

**OUR NEXT MEETING IS APRIL 6, 2024
FROM 9:00 A.M.-12:00 P.M.**

APRIL MEETING (4/6)

In addition to our regular meeting, we will have a mini trunk show with Crazy Woman Glass. Crazy Woman Glass is owned by Leslie Ann Bitgood, a local Colorado glass artist. Leslie has been working with glass in various forms, including stained glass, fusing and jewelry, for over thirty years. Creating framework beads for the last twelve years was a natural transition for her into another aspect of working with glass.

As Tracy will not be at the meeting and we have a lot happening, we ask you to not bring any of your pieces for the UFO Challenge. Please hold on to those until the May meeting or later for display and admiration!

Immediately following the meeting, members who are interested are welcome to join a field trip to Beads & Needs in Colorado Springs. Beads & Needs offers a large selection of seed beads in all sizes and colors (Miyuki and Toho), delicas, crystals, pearls, fire polish, shaped and two-hole beads, findings Members can carpool from the Lowry Conference Center or Park Meadows. Nancy Cain will also join us at Beads & Needs to offer assistance in selecting colors that work together, etc. and get us even more excited for her upcoming classes in July! Members may want to pack a sack lunch for the field trip as we'll be heading down at the lunch hour.

* * * * * DESTASH AND SAMPLER * * * * *

Tables are now available for the **Destash**. You can sign up for a table at www.rockybeads.org. More information about the Destash can be found below.

If you have a project or technique you would like to teach to other members, the **call for instructors for the Sampler** is also open. Members can submit an instructor application at www.rockybeads.org. Again, more information regarding the Sampler can be found below.

WE HAVE A RAFFLE COORDINATOR!

Thank you to Debra Edell who has stepped up to co-lead our next raffle with Diane Kremer, who will be training her simultaneously. Due to how

www.rockybeads.org

All meetings are held at (unless announced otherwise):

**Lowry Conference Center
1061 Akron Way
Denver, 80230**

late it is in finding a raffle coordinator, we are going to postpone this year's raffle to April 2025. Also, thank you to Katlin Nolte for providing excellent raffle documentation. We all know that many hands make light work, and we will need plenty of hands to make the raffle another success. Watch for your opportunities to lend your hands! With moving the Raffle to April 2025, the 2025 De-Stash will be moved to May.

DESTASH (4/20)

NOTE: WE WILL BE HOLDING OUR SPRING DE-STASH ON SATURDAY, APRIL 20, AT THE LOWRY CONFERENCE CENTER FROM 9:00 A.M. UNTIL 11:30 A.M. If you have new or gently used beading supplies or other craft materials that you would like to find a new home for, **tables are now on sale through the RMBS website.** Tables will be \$10 each and availability is limited – be sure you sign up early to claim your space for passing your stash on. Limited to one table per member initially; sellers may be able to rent additional tables if not all are sold. The De-Stash will be open to the public as well. Setup begins at 8:00 am, breakdown must be completed by 12 noon.

PLEASE NOTE: Members are responsible for handling their own sales and collecting taxes: The tax rate to be collected is 8.81%. The RMBS does have state and Denver special events licenses for events that include retail sales. Sellers at the Destash will need to collect sales tax from customers. If a seller has their own special events license, they may remit their sales taxes directly to the taxing authorities or have the RMBS do so on their behalf. If a seller does not have a special events license, the RMBS will remit taxes on their behalf. By registering for this event, a member agrees to report the total amount of your sales and to remit your total sales tax collected at the event to Katie Haberkorn no later than May 4, 2024. If you have a special events license and choose to remit your taxes directly, this will need to be completed by May 20, 2024.

THE SAMPLER (6/1 AND 6/2)

The Sampler will be held June 1 and 2 and the call for instructors has opened. All instructors and students are required to be current members of the RMBS. The Sampler is a popular event where members teach members a project or technique. If you would like to teach a project or technique, put on your thinking cap, pull together information and submit your application! We are planning to have four sessions, 9:00 a.m.-noon and 1:00-4:00 p.m. on both Saturday and Sunday, with a minimum of four to five classes during each session, depending on the number of instructor applications submitted. You may teach a design, technique or pattern of another artist with the express permission of that artist. Instructors receive a stipend and may collect a kit fee from students. We are asking instructors to limit the price for the kits to a maximum of \$30 where possible. Your kit may be priced higher but please remember that this could limit members willing to sign up for your class as it could also limit their ability to take another class and pay for that kit as well. Applications can be submitted through April 15 after which instructors will be notified if their class has been accepted. Instructors can submit applications to teach up to four classes.

Registration will open for members to sign up for Sampler classes on May 1 and close on May 15, to allow instructors time to prepare student kits by the Sampler.

2024 CALENDAR CHANGE

The meeting date for the July meeting is being moved to Friday evening, July 12, from 6:00-9:00 p.m. for a special Design Chat presentation by Nancy Cain prior to her two workshops. This presentation is open to all members, is free and does not require registration. More information on Nancy's two workshops can be found in the Workshops section. Registration will open in May.

YOUR HELP IS NEEDED

- **Social Media Coordinator** - If you are a social media wizard, we are also looking for a volunteer or volunteers to manage our Facebook, Instagram and any other desired social media posts. Please reach out to Clare Pramuk if you have an interest.



UPCOMING CRAFT VENUES/SHOWS

THE INTERNATIONAL GEM & JEWELRY SHOW – 3/29-3/31

The International Gem & Jewelry Show will be held March 29-31, 2024 at the Crowne Plaza Denver Airport (Salon AE), 15500 E. 40th Ave. Denver, Colorado. Admission is \$8 at the door, \$6 is purchased in advance online. Children under 9 are not permitted. Information on the show and exhibitors can be found at: <https://www.intergem.com/events/upcoming-shows/denver-co-march-29-31-2024>.

MAKERS FESTIVAL COLORADO – 4/10-4/13

Previously known as Yarn Fest, this event has been expanded to include yarn, fiber and beads! While there are not yet a lot of bead vendors, many of our members also craft with yarn and fiber. The Makers Festival also features many classes, including four all-day metalworking classes being taught by Anne Mitchell. Anne is a popular metalworking instructor who has taught classes for the RMBS at our former Bead Bazaar as well as workshops. We had hoped to bring Anne back as an instructor for a weekend of workshops but have not been able to arrange this logistically. Class fees for Anne's classes are \$245 per day plus a kit fee ranging from \$125-\$170. If you would like to take a class or classes with Anne or another instructor, you can see all classes and workshops, together with information on vendors and other activities for the Makers Festival Colorado here: [Maker Festivals Colorado | Yarn Fest Loveland | Jewelry & Bead Show](#).

COLORADO STATE BUTTON SOCIETY – 4/13-4/14

The Colorado State Button Society invites the public to join them on April 13th and 14th for its annual button show, The World Tour of Buttons. The show is held at the Embassy Suites by Hill at Denver Central Park, 4444 Havana Street, Denver, Colorado. More information about the World Tour of Buttons can be found here: <http://www.coloradobuttons.com/>.

GALLERY AT THE LOWRY CONFERENCE CENTER

If you would like to display any of your pieces in the Gallery at the Lowry Conference Center, please bring your pieces to a meeting. New work is always welcome, especially your work completed in our ongoing UFO challenge! Helen Littlejohn is coordinating the receipt and display of all pieces, as well as any sale of pieces a member offers for sale. Helen's contact information is helenlittlejohn@gmail.com or (303) 907- 4589. If you haven't already, please take some time to view the wonderful work in the showcase.

KING SOOPERS COMMUNITY REWARDS

RMBS receives donations quarterly through the King Soopers Community Rewards program based upon amounts spent at King Soopers by registered participants – you don't have to do anything other than sign up! If you haven't signed up, instructions are here: <https://rockybeads.org/wp-content/uploads/2020/09/FREE-MONEY-FOR-RMBS-1.pdf>.

HOW TO CONTACT 2024 BOARD MEMBERS, OFFICERS, COMMITTEE CHAIRS AND OTHER

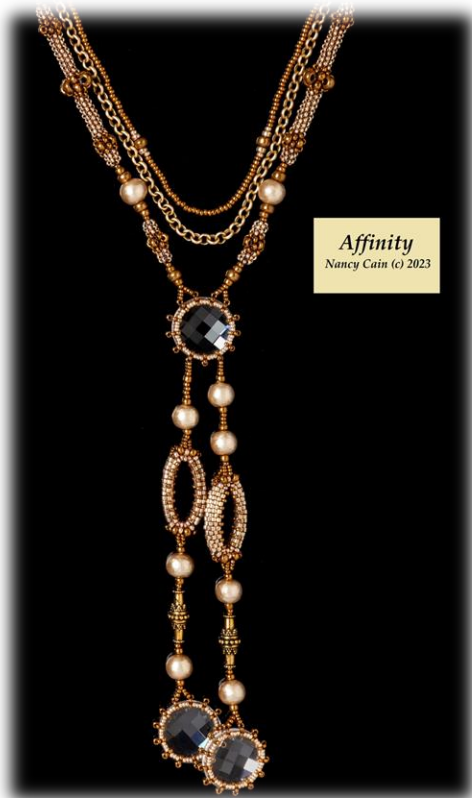
NAME	POSITION	EMAIL
Clare Pramuk	President/Board Member	president@rockybeads.org
Tracy D'Angelo Knight	Vice President/Board Member	vicepresident@rockybeads.org
Katie Haberkorn	Treasurer/Board Member	treasurer@rockybeads.org
Kathleen Sloan	Secretary/Board Member	secretary@rockybeads.org
Bertha Adamson	Webmaster	webmaster@rockybeads.org
Tracy D'Angelo Knight	Programs Chair	programs@rockybeads.org
Debra Edell and Diane Kremer	Raffle Co-Chairs	raffle@rockybeads.org
Pat Lucero	Trunk Show Chair	trunkshow@rockybeads.org
POSITION AVAILABLE	Social Media Coordinator	social@rockybeads.org
Helen Littlejohn	Showcase Coordinator	showcase@rockybeads.org
JoAnn Patterson Lavelly	Scholarship Coordinator	scholarships@rockybeads.org

NAME	POSITION	EMAIL
Pat Lucero	Door Prize Coordinator	doorprizes@rockybeads.org
Jody Charmatz	Hospitality Coordinator	hospitality@rockybeads.org
Sandy Brock	Newsletter Editor	newsletter@rockybeads.org
Membership Issues		membership@rockybeads.org

WORKSHOPS

Saturday, July 13
9:00 a.m. – 4:00 p.m.
Instructor: Nancy Cain

Affinity



Create a long vintage style, 3-layered necklace of peyote stitch rope, chain, and stringing. The uniquely structured beaded ovals accent the fringe of minimalist bezeling around vintage 20mm clear crystal stones and the use of the beautifully textured Miyuki cotton pearls adds a vintage touch. Skill Level: Intermediate/Advanced.

Nancy will have four colorways from which members can choose.



Member Class Fee: \$TBD
Non-Member Class Fee: \$TBD
Kit Fee: \$145

Registration is required and space will be limited.



Sunday, July 14
9:00 a.m. – 4:00 p.m.
Instructor: Nancy Cain

Santa Fe

The southwest inspired Santa Fe necklace, while simple appearing, is more technically advanced with a rope variation called Cain's Chain. It is an asymmetrical, two-step, spiraling netting variation. Nancy has updated it and added a structural peyote three-tiered open pendant at the bottom. Firepolish beads grace the rope and add swing at the bottom of the pendant. Skill Level: Intermediate/Advanced.

Nancy has three colorways from which members can choose.



Member Class Fee: \$TBD
Non-Member Class Fee: \$TBD
Kit Fee: \$95

Registration is required and space will be limited.