



VOL 2022, ISSUE 9

2022 PROGRAMS SCHEDULE

OCT 1: Meeting and Voting for Officers; Play Date with Alcohol Inks

OCT 22: Trunk Show

NOV 5: Pearl Anniversary Challenge and Bead In

DEC 3: Holiday Celebration!

**JOIN US SATURDAY, OCTOBER 1, 2022,
9:00 AM TO NOON, FOR
ELECTION OF OFFICERS AND
A PLAY DATE WITH ALCOHOL INKS**

LOCATION:

Lowry Conference Center
Room 200B
1061 Akron Way
Denver, 80230

OCTOBER MEETING – OCTOBER 1 – ELECTION OF OFFICERS AND PLAY DATE WITH ALCOHOL INKS

Your attendance is encouraged at the October meeting where members will elect our officers for 2023. We would like as many members as possible to attend for their approval of our new officers and board of directors. The following members have volunteered to run for the positions of:

President - Clare Pramuk

Vice President/Programs Chairperson - Tracy D'Angelo

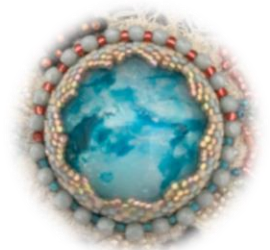
Secretary - Kathleen Sloan

Treasurer - Patricia Murray (Patricia will continue in this position for another year, if elected).

If anyone else has an interest in one of these offices, please let Diane Kremer know as soon as possible. In addition to being an officer, these members will also constitute our new board of directors.

We will also have an update of the results of the Jewelry Arts Raffle. Katlin would like to thank everyone who helped make the raffle possible, from helping to set up the raffle to purchasing tickets and sharing the raffle with your family and friends. We raised \$5,867 from raffle ticket sales after expenses. Here are some fun facts about the raffle:

- 51% of the ticket purchasers were members of the Rocky Mountain Bead Society.
- The Freedom's Professional Flex Shaft Set sold the most tickets with the \$500 Gift Certificate from JewelrySupply.com closely following.
- While most of the tickets were purchased within Colorado, we had ticket sales in Texas, Michigan, Washington, Florida, South Carolina and Connecticut to just name a few states!



To cap off the meeting, we will have alcohol ink supplies and kits available for members to try their hand at creating with alcohol inks. Kits will be available for \$5 and include glass cabochons, alcohol ink paper, a Dora Beth piece, metal washer . . . and we will have alcohol inks and other tools available for you to play with.

*“He who works with his hands is a laborer.
He who works with his hands and his head is a craftsman.
He who works with his hands and his head and his heart is an artist.”*
– Francis of Assisi

RMBS TRUNK SHOW – SATURDAY, OCTOBER 22

On Saturday, October 22, from 9:00 a.m. to 4:00 p.m., we will be hosting our first Trunk Show. Pat Lucero and Susan Van Norton have been hard at work reaching out to vendors for a limited “bazaar.” This is not a de-stash! This will be some of our popular, more local, vendors selling their wares to members and the public from 9:00 a.m.-4:00 p.m. on Saturday, October 22. If you would like to volunteer to help at the event, please contact Pat Lucero or Susan Van Norton.

Vendors currently signed up to participate are:

Melinda Barta
The Bead Parlor
Beyond Beadery
Bright Star Gemstones
Marcia Kmack

Crazy Woman Glass
Desert Gems
Jessie Rae Studio
Loco Lobo Designs
Orca Gems

Peacock Bead Shop
Rachel's Paint Skins
The Toby Bowlby Collection
Alisa Hjermstad with A Nudge
of Nature

If you've missed the Rocky Mountain Bead Bazaar, you won't want to miss our RMBS Trunk Show! Be sure to share with your family, friends and others about the Trunk Show as it will be open to the public and **ADMISSION IS FREE!!**

NOVEMBER MEETING – PEARL ANNIVERSARY CHALLENGE AND BEAD IN

Have you started your challenge piece for the Pearl Anniversary Challenge? As the familiar saying goes, “the world is your oyster.” Or, in this case, create a piece where the look and feel of the design is “PEARL.” We encourage you to think outside the box in your design. This can be achieved in so many ways – use pearls in a bead weaving design, embroider an underwater themed tapestry that drips of pearls and pearl-colored accents; create a fantastic polymer clay necklace that gives the look and feel of pearls – the sky (or perhaps it's reflection in the ocean) is the limit! You can use any medium you would like and your piece can be jewelry, a tapestry, object, anything that will make us think PEARL when we view the item. Final categories will be decided at the meeting based on the number of entries. There must be at least three pieces in a specific medium to have a separate category and a prize awarded for that category. If there are fewer than three pieces in a specific medium, those pieces will be combined with other pieces in an “other” category for judging. If less than six entries are received in total, regardless of medium, all entries will be judged together and only one prize awarded. You may also enter more than one piece in the challenge, but it must be in a different medium. If you have any questions about the Challenge, please reach out to programs@rockybeads.org. Prizes will be \$25 in cash each for up to five different categories plus members' favorite.

In addition, we would like for members participating in the Challenge to consider displaying their pieces in our Bead and Jewelry Showcase at the Lowry Conference Center.

And if you are trying to finish gifts for your holiday season, we will be having a bead in. Bring your latest project or projects, a UFO (unfinished object) or PhD (project half done), pattern you are struggling with and would like help . . . and make some progress toward finishing. You may also see a future project you won't be able to pass up finding where the design/pattern might be available! We will also be participating in donations to charitable organizations during the holiday season. Mique Valdivia will provide more information and we will be collecting pieces at the holiday celebration in December.



DECEMBER MEETING – HOLIDAY CELEBRATION

Planning is underway for our December Holiday Celebration. Stay tuned for more information!

RMBS BEAD AND JEWELRY SHOWCASE AT THE LOWRY CONFERENCE CENTER

We still have display space available in the RMBS Bead and Jewelry Showcase. If you'd like to display your art, please bring your pieces to any of our meetings and Helen Littlejohn will coordinate displaying them. We would also like to add some new pieces regularly to keep the interest fresh for visitors to the Lowry Conference Center. The consignment form can be found on the rockybeads.org website. **RMBS will not be responsible for completing or collecting funds for any sales. All sales transactions will be the responsibility of the member.** In addition to allowing our members to showcase their talents, our goals for the showcase are threefold: to educate, to promote and/or sell our members' work, and to increase the visibility of RMBS.

KING SOOPERS COMMUNITY REWARDS

If you haven't signed up to participate in the King Soopers Community Rewards, please do! Your family and friends can participate as well. RMBS receives funds quarterly from King Soopers for participating. For the second quarter of 2022, RMBS received \$328.57 with participation from 31 households! Instructions for signing up can be found here: <https://rockybeads.org/wp-content/uploads/2020/09/FREE-MONEY-FOR-RMBS-1.pdf>. If you need help signing up, bring your King Soopers loyalty card (SooperCard) with you to any in-person meeting and someone can help you sign up! You don't have to do anything other than sign up to help RMBS receive funds through the King Soopers Community Rewards.

MEMBERSHIP UPDATES/RENEWALS

Log into your membership profile on the rockybeads.org website to renew your membership, check your renewal date, or update your contact information. You should receive renewal emails approximately two weeks before the due date. If you have any problems or questions regarding renewing or updating your membership profile, please contact the membership coordinator at membership@rockybeads.org.

2022 BOARD MEMBERS, OFFICERS, COMMITTEE CHAIRS AND OTHER

NAME	POSITION	EMAIL
Diane Kremer	President/Board Member	president@rockybeads.org
Carrie Tacquechi	Vice President/Board Member	vicepresident@rockybeads.org
Patricia Murray	Treasurer/Board Member	treasurer@rockybeads.org
Sandy Brock	Secretary/Board Member	secretary@rockybeads.org
Bertha Adamson	Membership Coordinator	membership@rockybeads.org
Carrie Tacquechi	Programs Chair	programs@rockybeads.org
Katlin Nolte	Raffle Chair	raffle@rockybeads.org
Beverly Nelson Pat Cwynar	Social Media Coordinators	social@rockybeads.org
Helen Littlejohn	Showcase Coordinator	showcase@rockybeads.org
JoAnn Patterson Lavelly	Scholarship Coordinator	scholarships@rockybeads.org
Pat Lucero	Door Prize Coordinator	doorprizes@rockybeads.org
Sandy Brock	Newsletter Editor	newsletter@rockybeads.org